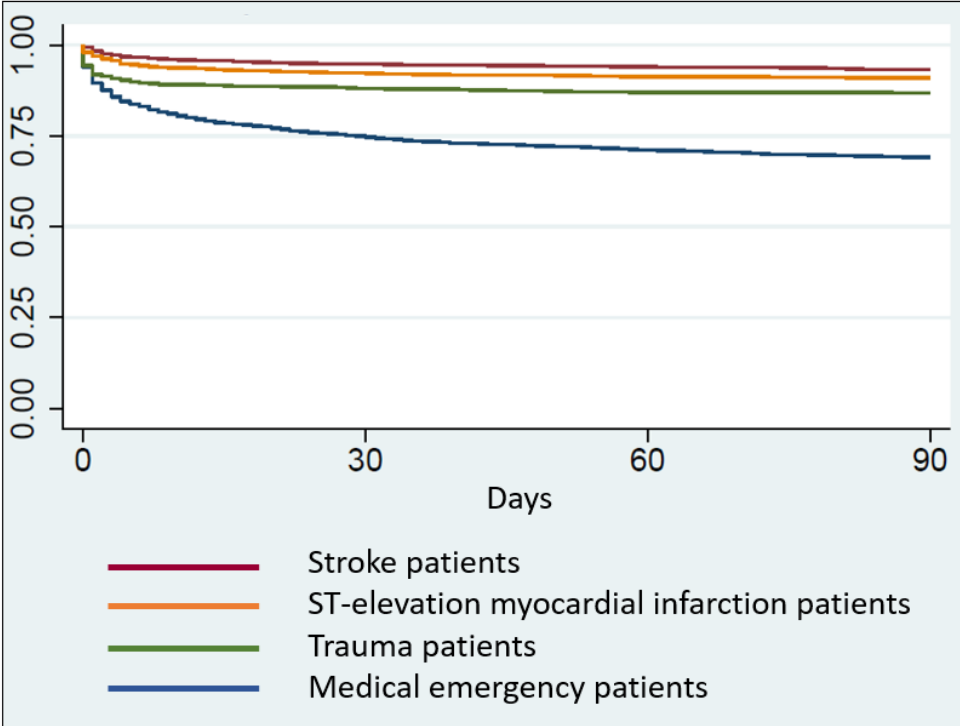
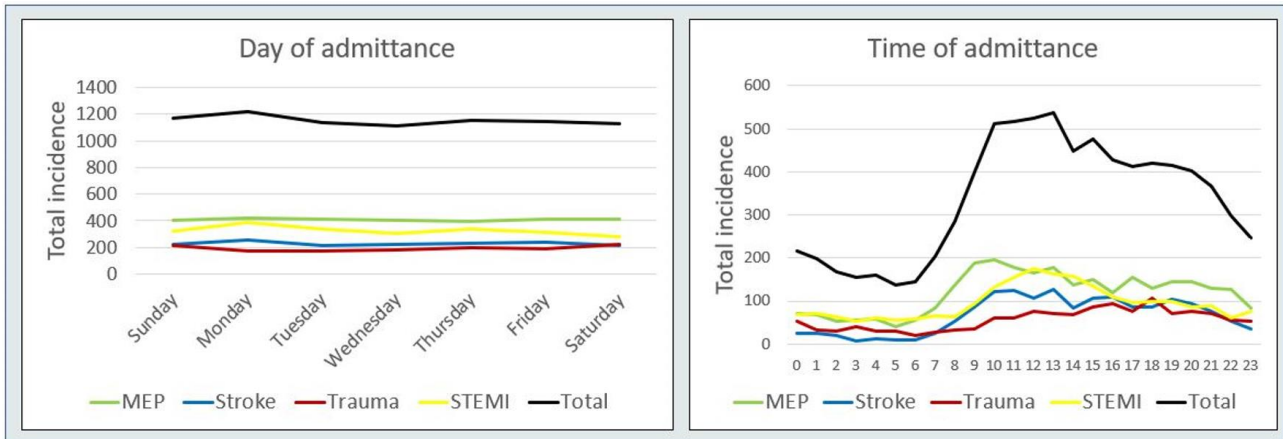


Supplement figure s1: Kaplan-Meier survival estimates



Supplement figure s2: Day and time of arrival



STEMI: ST-elevation myocardial infarction patients; MEP: medical emergency patients

Supplement table s1: Age, sex, and length of stay according to 7-day mortality and trigger-team

Trigger team	Age mean (SD)		LOS days median (IQR)		Sex (% female/male)	
	<i>Survived 7-day median (IQR)</i>	<i>Death within 7-day median (IQR)</i>	<i>Survived 7-day median (IQR)</i>	<i>Death within 7-day median (IQR)</i>	<i>Survived 7-days female (%)</i>	<i>Death within 7 days female (%)</i>
Trauma (n=1206 survival / 141 death)	45 (28-60)	65 (49-78)	4 (1-14)	0 (1-1)	347 (29%)	40 (28%)
STEMI (n=2154 survival / 130 death)	64 (54-74)	76 (69-83)	3 (3-5)	1 (0-4)	572 (27%)	47 (36%)
Stroke (n=1540 survival / 54 death)	67 (55-76)	74 (63-79)	3 (1-10+)	1 (1-3)	653 (42%)	24 (44%)
MEP (n= 2395 survival / 455 death)	67 (52-78)	78 (67-86)	5 (1-10)	1 (0-3)	1100 (46%)	233 (51%)

STEMI: ST-elevation myocardial infarction patients; MEP: medical emergency patients; SD: standard deviation; IQR: interquartile

Supplement table s2a: Trauma trigger calls covering 1330 patient contacts. All diagnostic discharge ICD10 diagnosis at ICD10 group 3-digit level

A total of 128 different diagnosis at ICD10 3-digit level, 100 diagnosis each with <5 registered patients, not presented in the table.

17 patients with missing diagnosis.

ICD10 diagnosis	Frequency	Percentage
DF10	5	0.38
DG40	6	0.45
DG82	12	0.90
DI60	8	0.60
DI61	6	0.45
DI63	6	0.45
DR10	5	0.38
DS00	7	0.53
DS01	18	1.35
DS02	37	2.78
DS06	148	11.13
DS12	29	2.18
DS13	5	0.38
DS14	9	0.68
DS20	9	0.68
DS22	56	4.21
DS25	6	0.45
DS27	24	1.80
DS32	42	3.16
DS36	28	2.11
DS37	12	0.90
DS40	5	0.38
DS52	15	1.13
DS72	23	1.73
DS82	20	1.50
DT07	531	39.92
DZ03	25	1.88
DZ50	67	5.04

Supplement table s2b: STEMI trigger call covering 2264 patient contacts. All diagnostic discharge ICD10 diagnosis at ICD10 group 3-digit level

A total of 83 different diagnosis at ICD10-3-digit level, 61 diagnosis each with <5 registered patients, not presented in the table.

20 patients with missing diagnosis.

ICD10 diagnosis	Frequency	Percentage
DI20	30	1.33
DI21	1,643	72.57
DI24	14	0.62
DI25	75	3.31
DI30	24	1.06

DI35	12	0.53
DI40	9	0.40
DI42	29	1.28
DI44	8	0.35
DI46	28	1.24
DI47	12	0.53
DI48	14	0.62
DI49	24	1.06
DI50	36	1.59
DI71	6	0.27
DJ18	8	0.35
DJ96	5	0.22
DR07	12	0.53
DR57	11	0.49
DZ03	117	5.17
DZ50	23	1.02
DZ95	29	1.28

Supplement table s2c: Stroke trigger calls covering 1572 patient contacts. All diagnostic discharge ICD10 diagnosis at ICD10 group 3-digit level

A total of 120 different diagnosis at ICD10 3-digit level, 96 diagnosis each with <5 registered patients not presented in the table.

22 patients with missing diagnosis.

ICD10 diagnosis	Frequency	Percentage
DC71	5	0.32
DC79	7	0.45
DF10	9	0.57
DG40	39	2.48
DG43	19	1.21
DG45	259	16.48
DH81	5	0.32
DI60	7	0.45
DI61	75	4.77
DI63	468	29.77
DI64	36	2.29
DI65	6	0.38
DI69	31	1.97
DJ18	6	0.38
DM53	5	0.32
DR25	6	0.38
DR29	92	5.85
DR42	10	0.64
DR51	21	1.34
DR55	11	0.70
DR56	6	0.38
DZ03	77	4.90
DZ50	227	14.44

Supplement table s2d: Medical Emergency patients trigger call covering 2820 patient contacts. All diagnostic discharge ICD10 diagnosis at ICD10 group 3-digit level

A total of 314 different diagnosis at ICD10 3-digit level, 210 diagnosis each with <5 registered patients, not presented in the table.

30 patients with missing diagnosis.

ICD10 diagnosis	Frequency	Percentage
DA09	5	0.18
DA40	9	0.32
DA41	95	3.37
DA49	14	0.50
DC34	14	0.50
DC50	7	0.25
DC79	5	0.18
DD64	6	0.21
DE10	17	0.60
DE16	12	0.43
DE86	20	0.71
DE87	22	0.78
DF05	6	0.21
DF10	66	2.34
DF43	8	0.28
DF44	5	0.18
DF60	6	0.21
DG00	10	0.35
DG04	3	0.11
DG40	120	4.26
DG41	20	0.71
DG45	8	0.28
DG93	6	0.21
DI21	34	1.21
DI26	21	0.74
DI35	23	0.82
DI42	10	0.35
DI44	13	0.46
DI46	85	3.01
DI47	19	0.67
DI48	37	1.31
DI49	11	0.39
DI50	58	2.06
DI60	41	1.45
DI61	66	2.34
DI63	42	1.49
DI64	5	0.18
DI69	7	0.25
DI71	54	1.91
DI95	5	0.18
DJ03	5	0.18

DJ09	7	0.25
DJ13	5	0.18
DJ15	43	1.52
DJ18	206	7.30
DJ44	168	5.96
DJ45	17	0.60
DJ46	5	0.18
DJ69	41	1.45
DJ81	17	0.60
DJ86	6	0.21
DJ93	12	0.43
DJ96	138	4.89
DK22	7	0.25
DK25	12	0.43
DK26	17	0.60
DK55	9	0.32
DK56	11	0.39
DK62	9	0.32
DK65	5	0.18
DK70	5	0.18
DK85	11	0.39
DK86	5	0.18
DK92	17	0.60
DM54	8	0.28
DN17	5	0.18
DN18	14	0.50
DN20	7	0.25
DN30	16	0.57
DN39	16	0.57
DR04	5	0.18
DR06	23	0.82
DR07	10	0.35
DR09	5	0.18
DR10	20	0.71
DR25	34	1.21
DR29	9	0.32
DR40	5	0.18
DR41	6	0.21
DR42	5	0.18
DR51	14	0.50
DR55	46	1.63
DR56	14	0.50
DR57	32	1.13
DS06	13	0.46
DT39	26	0.92
DT40	45	1.60
DT42	24	0.85
DT43	25	0.89
DT50	25	0.89
DT58	5	0.18
DT63	11	0.39
DT65	6	0.21

DT78	38	1.35
DT79	11	0.39
DT81	14	0.50
DT88	8	0.28
DZ02	9	0.32
DZ03	46	1.63
DZ04	9	0.32
DZ50	76	2.70

Supplement table s3: Registries for patients with trauma, STEMI, and stroke

Trigger team	Registry
Trauma	Danish Trauma Registry (https://www.rkkp.dk/kvalitetsdatabaser/databaser/dansk-traumeregister/) and TraumaRegister DGU (https://www.traumaregister-dgu.de/)
STEMI	Acute Coronary Syndrome STEMI (ACS) Registry (https://www.escardio.org/Research/Registries-&-surveys/Observational-research-programme/Acute-Coronary-Syndrome-STEMI-ACS-Registry)
Stroke	Danish Stroke Registry (https://www.sundhed.dk/sundhedsfaglig/kvalitet/kliniske-kvalitetsdatabaser/hjerte-kar-sygdomme/apopleksi-nip/)

STEMI: ST-elevation myocardial infarction