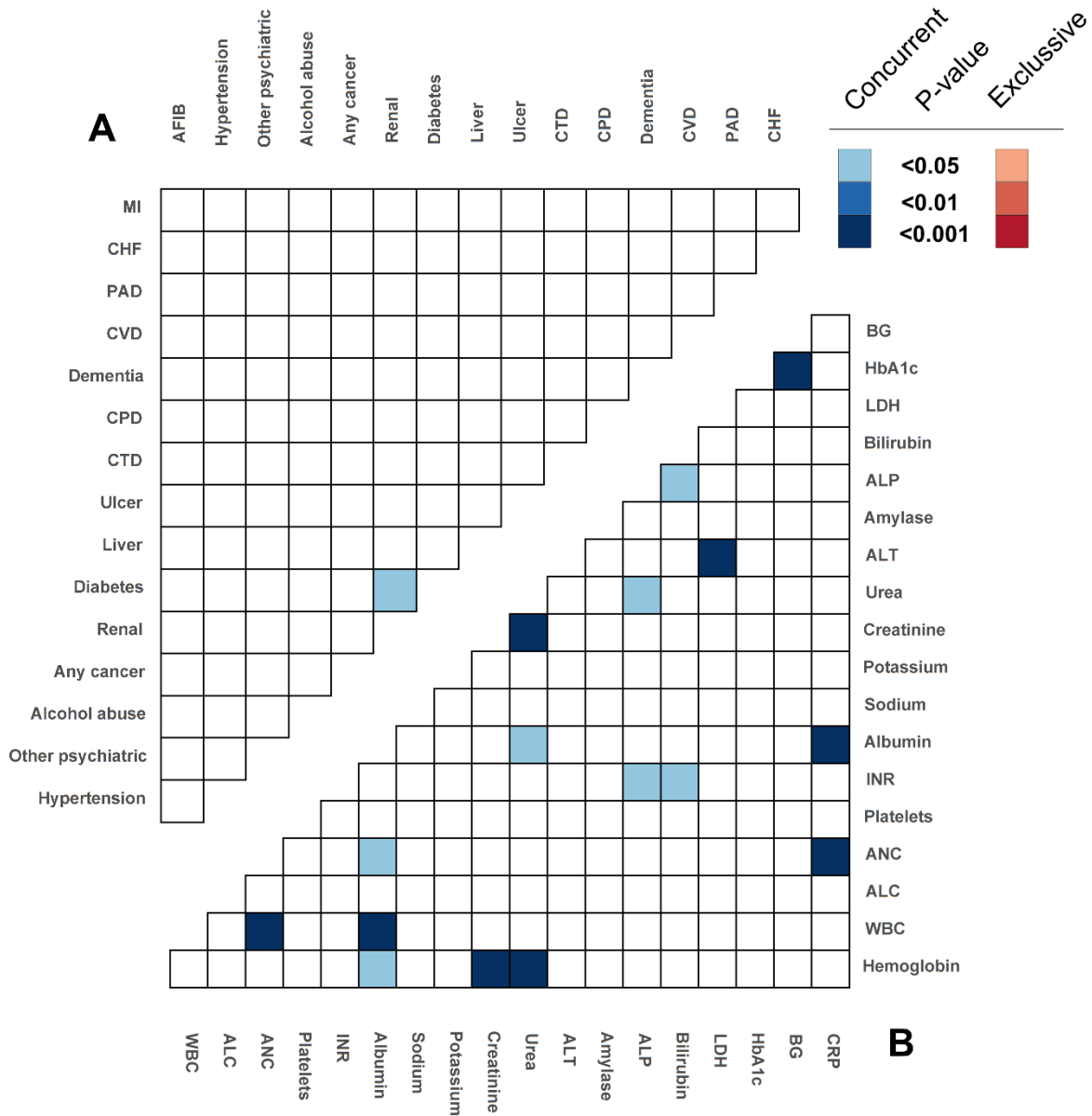


# Supplementary data

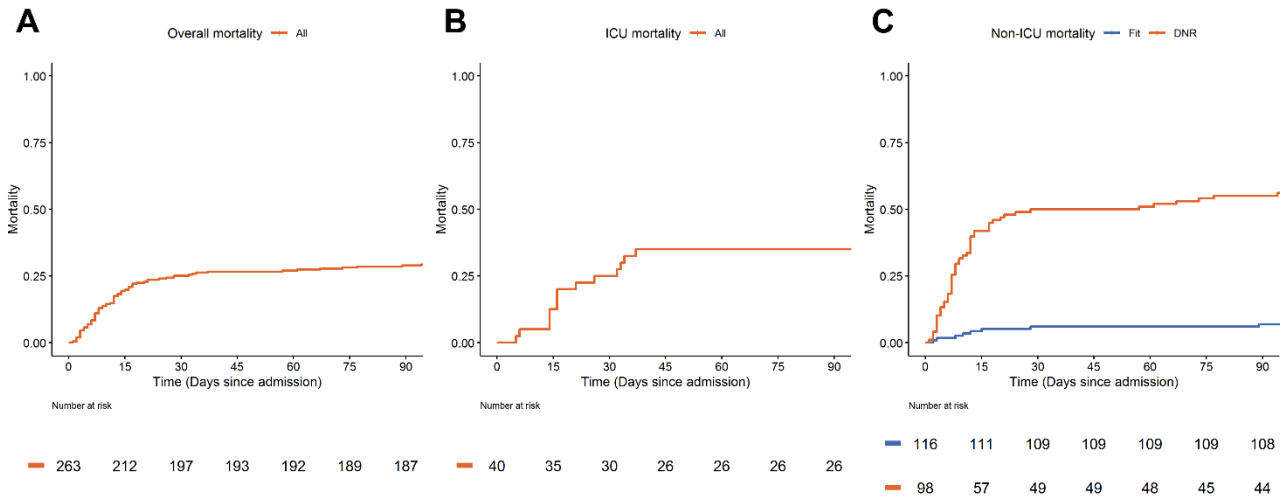
## Prognostic factors of 90-day mortality in patients hospitalized with COVID-19

### Supplementary figure 1



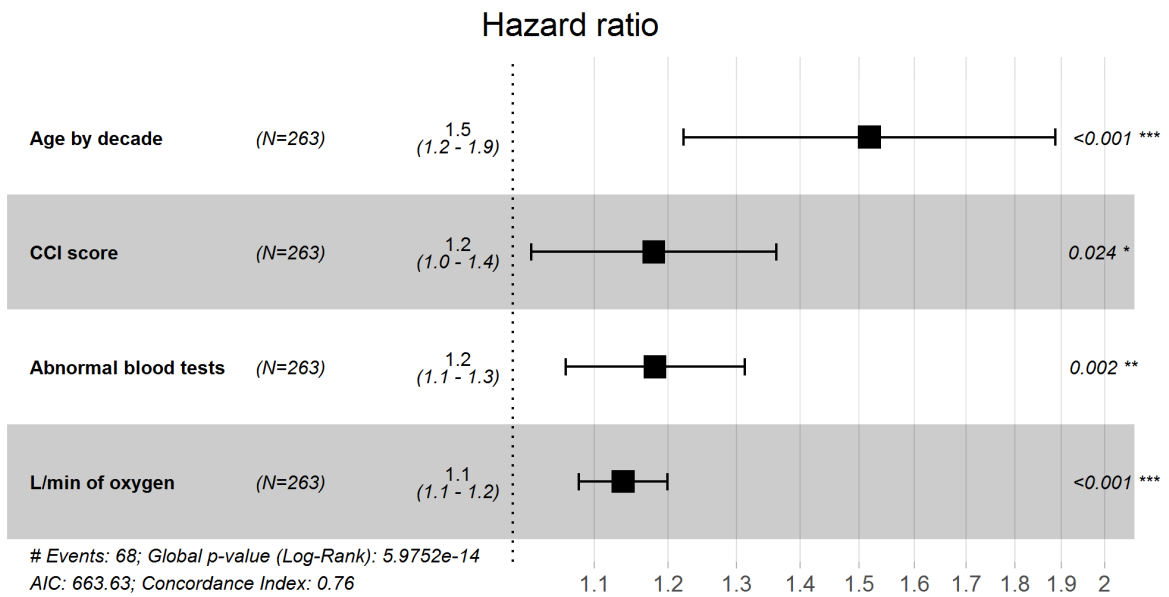
**Fig 1.** Correlogram of comorbidities (A) and abnormal blood tests (B). Pairwise Fisher’s exact test on all variables. Following Bonferroni correction, two variables with a statistically significant correlation ( $P < 0.05$ ) are colored. Concurrent entities (odds ratios  $> 1$ ) shown in blue and mutually exclusive entities (odds ratios  $< 1$ ) shown in red.

Supplementary figure 2



**Fig 2.** Overall mortality in all 263 hospitalized patients with COVID-19 (A). Mortality for the 40 patients who required intensive care (B). Mortality for the 214 patients, who remained in the medical ward (non-ICU) stratified on fitness for intensive care (C).

Supplemental Figure 3



**Fig 3.** Mutually adjusted Cox regression analysis of age by decade, Charlson Comorbidity score (CCI), abnormal blood test. All variables included as numerical values without stepwise selection or elimination.

Supplementary Table 1

Comorbidities	ICD-10 diagnoses
Alcohol abuse	F10.1, F10.2, F10.24, F10.25, F10.30, F10.73, K70.0, K86.0
Atrial fibrillation/flutter	I48.0, I48.1, I48.2, I48.9
Hypertension	I10, I10.9, I15.9, K76.6, F20.0, F25.91, F30.9, F33.0, F33.2, F33.30, F33.4, F33.9,
Psychiatric disease (other)	F41.8, F41.9

Supplementary Table 2

Variable		n (%)	<ULN, n (%)	>ULN, n (%)	Normal range
Hemoglobin	Abnormal	88 (33.5)	88 (33.5)	NA	>5.1 g/dL (M) and >4.5 g/dL (F)
WBC	Abnormal	95 (36.1)	21 (8.0)	74 (28.1)	3.5-8.8 x 1000 per $\mu$ L
ALC	Abnormal	171 (65.5)	169 (64.8)	2 (0.8)	1.0-3.5 x 1000 per $\mu$ L
	missing	2			
ANC	Abnormal	113 (43.3)	5 (1.9)	108 (41.4)	1.6-5.9 x 1000 per $\mu$ L
	missing	2			
Platelets	Abnormal	67 (25.5)	41 (15.6)	26 (9.9)	145-390 x 1000 per $\mu$ L
D-dimer	Abnormal	108 (80.0)	NA	108 (80.0)	<0.5 U/L
	missing	128			
INR	Abnormal	28 (11.0)	NA	28 (11.0)	<1.2
	missing	8			
Ferritin	Abnormal	90 (61.2)	NA	90 (61.2)	<300 $\mu$ g/L
	missing	116			
CRP	Abnormal	93 (35.4)	NA	93 (35.4)	<100 mg/L
Albumin	Abnormal	142 (55.0)	141 (54.7)	1 (0.4)	34-45 g/L
	missing	5			
Sodium	Abnormal	125 (47.5)	102 (38.8)	23 (8.7)	137-144 mmol/L
Potassium	Abnormal	95 (36.1)	76 (28.9)	19 (7.2)	3.5-4.4 mmol/L
Creatinine	Abnormal	93 (35.4)	NA	93 (35.4)	<90 $\mu$ mol/L
Urea	Abnormal	94 (37.3)	NA	94 (37.3)	<7.9 mmol/L
	missing	11			
ALT	Abnormal	72 (28.2)	NA	72 (28.2)	<45 U/L
	missing	8			
Amylase	Abnormal	21 (8.5)	NA	21 (8.5)	<120 U/L
	missing	15			

ALP	Abnormal	58 (22.4)	NA	58 (22.4)	<105 U/L
	missing	4			
Bilirubin	Abnormal	10 (3.9)	NA	10 (3.9)	<25 µmol/L
	missing	4			
LDH	Abnormal	178 (69.8)	NA	178 (69.8)	<205-255 U/L (age-dependent)
	missing	8			
BG	Abnormal	161 (63.1)	0 (0.0)	161 (63.1)	4.2-6.3 mmol/L
	missing	8			
HbA1c	Abnormal	39 (21.5)	NA	39 (21.5)	<48 mmol/mol
	missing	82			

Number of patients with abnormal blood tests. Abbreviations: ULN, upper limit of normal; NA, not available; WBC, white blood count; ALC, absolute lymphocyte count; ANC, absolute neutrophil count; INR, international normalized ratio; ALT, alanine aminotransferase; ALP, alkaline phosphatase; LDH, lactate dehydrogenase; HbA1c, hemoglobin A1c.